

	FUEL FILLER VERIFICATION INFORMATION BULLETIN	IB-013 REV 1 2016-04-08
		Page 1 of 1

AMBULANCE TYPE: ALL MX151D

ISSUE

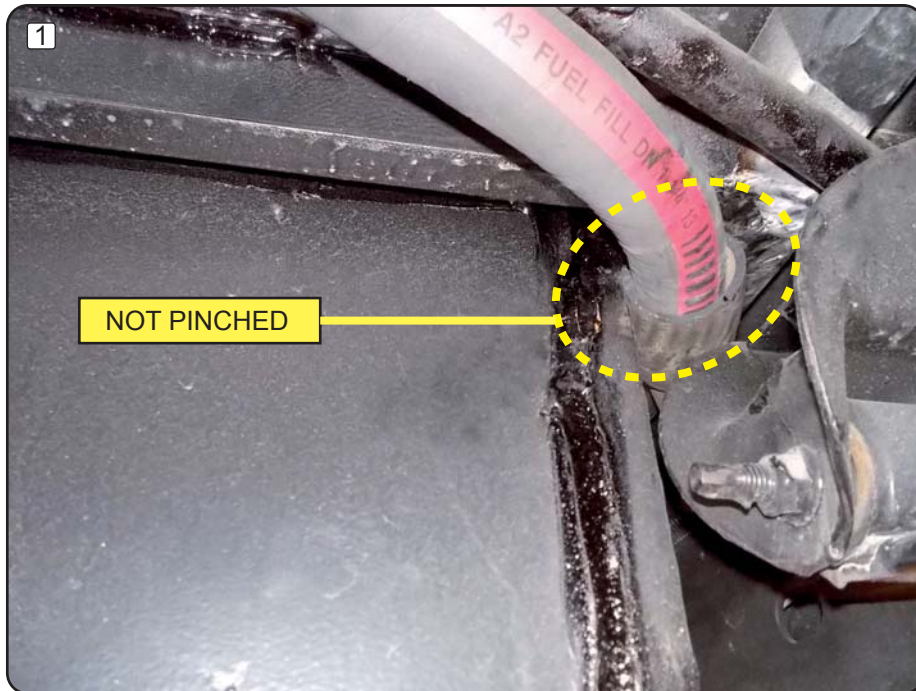
This bulletin is to inform owners of Demers Ambulances that some complaint were brought to Demers Ambulances attention concerning some ambulances having hard time to fill the gas tank.

ACTION

If the vehicle does indicate some slow fuel filling or some fuel spitting back while fueling the vehicle, please perform the attach verification and modification.

Should you have questions please call our Demers Customer Service Centre toll free at **1-855-373-9789**.

- Locate fuel filler hose
- There may be variance in how the fuel filler was routed during production.
- To correct routing, make sure the following guidelines are respected.
 - Make sure filler hose is not pinched (mostly creates spitback issues)
 - Make sure filler hose does not have a downward loop (creates slow fill issues)
Shorten hose at filler end if necessary, and use collars.



Filler hose can be routed around suspension holder, if there is enough clearance with the compartment.

Verify that it is not pinched between the module beams and the chassis frame or suspension holder.

Protective piece (E807930) can be used to prevent rubbing.



Filler hose can go around the other side of the suspension holder.

This routing is not pinched and does not loop down. The collar secures it in place.

However, it requires more hose length.

Make sure it has enough length before routing this way.

CE DOCUMENT EST LA PROPRIÉTÉ DE DEMERS AMBULANCES.
QUICONQUE PEUT DIVULGUER AUCUNE INFORMATION À
TOUTE PERSONNE AUTRE QUE DEMERS AMBULANCES
CONCERNANT TOUTES PIÈCES CONÇUES POUR OU PAR
DEMERS AMBULANCES.



TITRE : FUEL FILLER HOSE VERIFICATION			
DATE : 04/04/2016	DESS. : Y. DUBÉ	# DESSIN : # 00957	REV : 5
# ASS :			PAGE : 1 DE 1