



**AMBULANCE TYPE:** DEMERS MX151D-BCAS

**UNITS AFFECTED:** 63030 - 63079

**ISSUE:** Garbage is falling behind flip out garbage bin preventing adequate decontamination of area.

**ACTION:** Remove existing bin & hardware and replace with removable trash bin.



Original

Bin and flap door  
to be removed.



Modified

**SERVICE PROCEDURE:**

**Wear latex gloves for this procedure.**

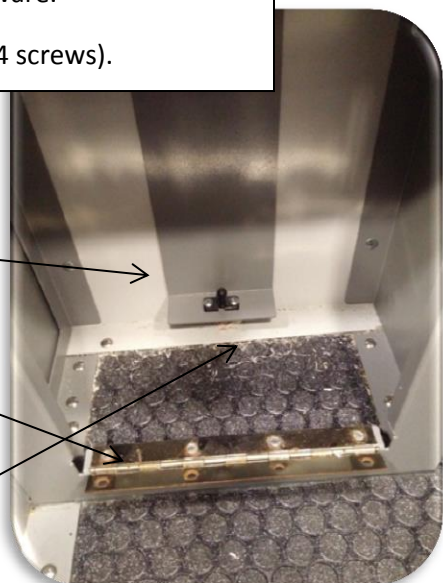
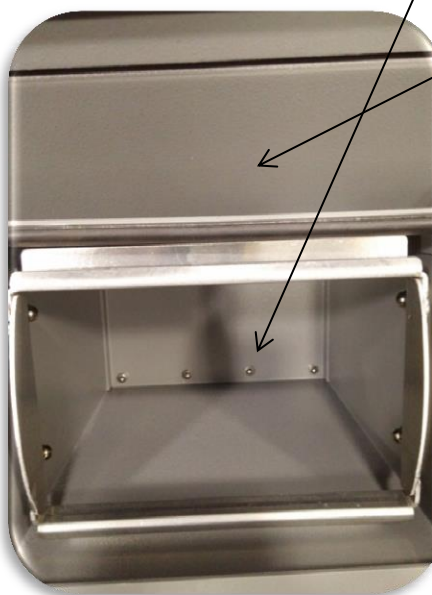
1 - Remove 4 nuts at bottom of bin, rotate bin to right to partially remove. Disconnect and remove shock and all hardware.

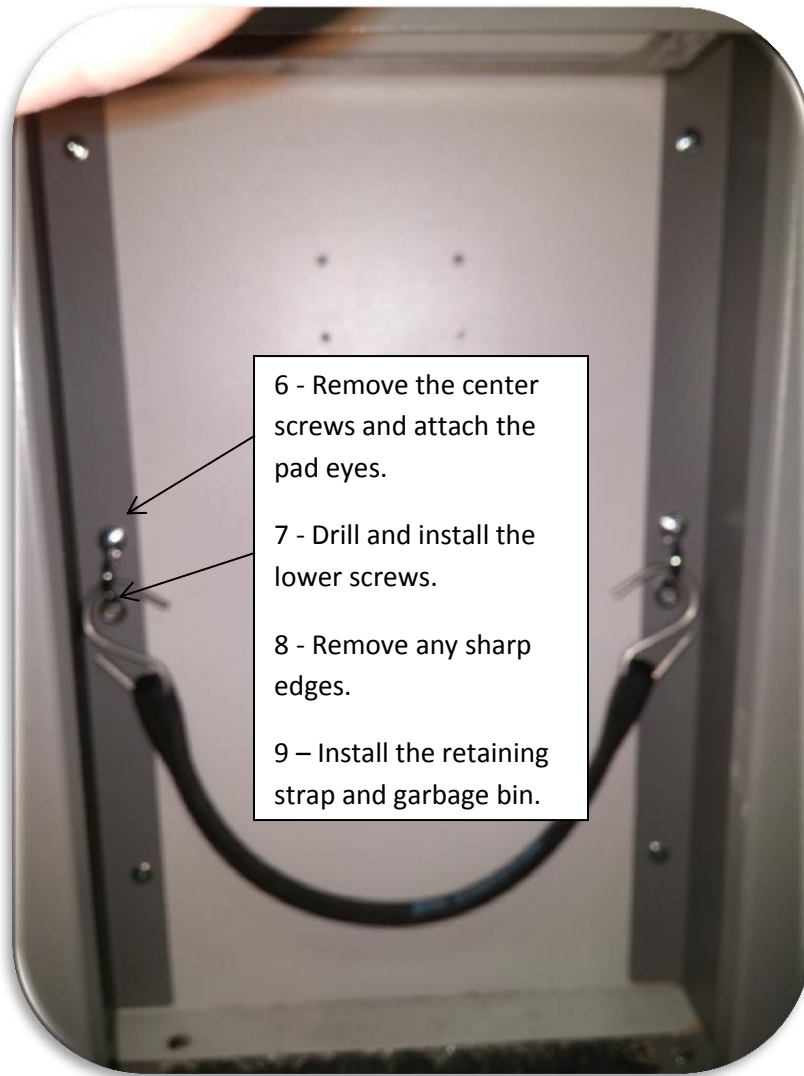
2 - Remove door & hinge (4 screws).

3 - Remove vertical brace at rear of compartment. (4 screws)

4 - Drill out 4 pop rivets and remove hinge. Remove any sharp edges.

5 - Silicone all joints at the floor inside of the compartment.





**Note:** If at any time any bio-hazard materials are found, contact the local ambulance station to have it removed.

Please code this modification on your invoice as: **GMOGB**

Labour Time: **1 Hour**

Any questions or concerns please contact Fleet @ 1 877 652 7465